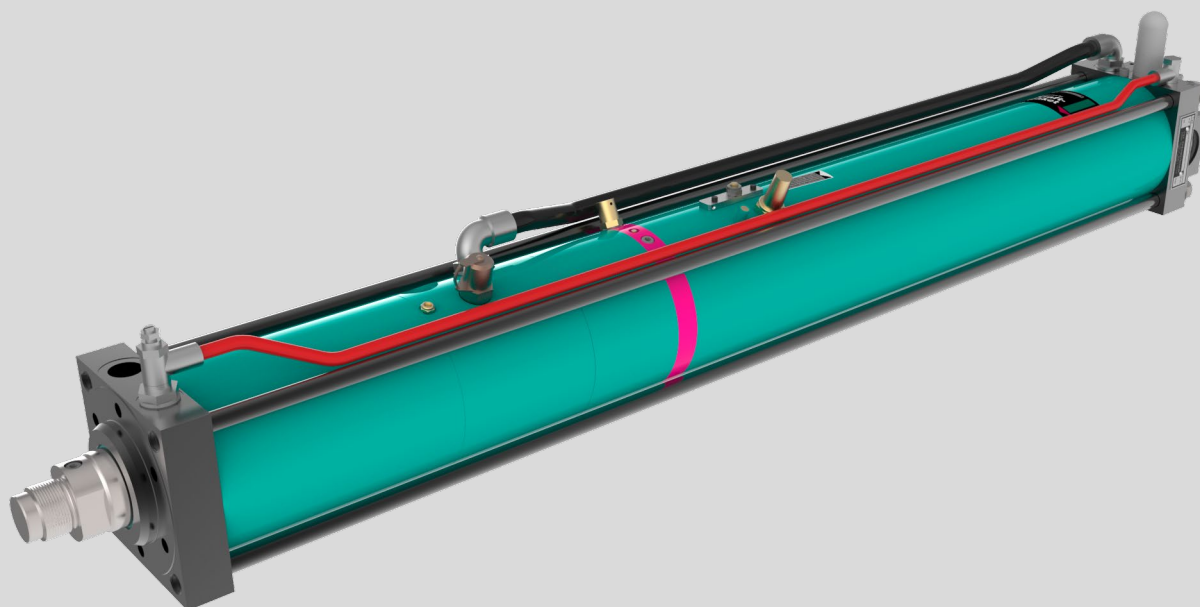


TOX[®]-Powerpackage line-Q Type Q-S and Q-K

Data sheet 10.50
2024/01

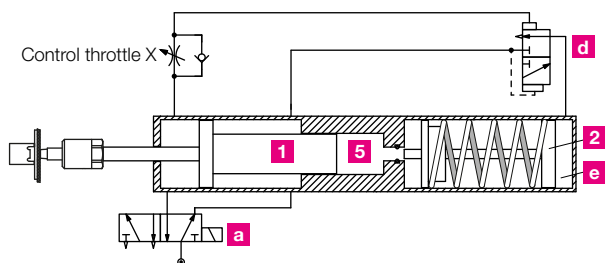


TOX[®]-Powerpackage line-Q

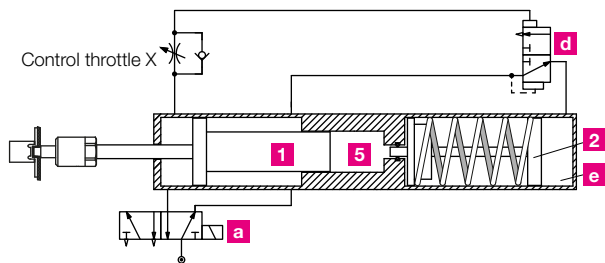
Advantages

- Standard sizes always available
- Short delivery times
- 10million cycles within 12 months without work shift restrictions
- Economical
- Minimum air consumption
- Medium maintenance interval

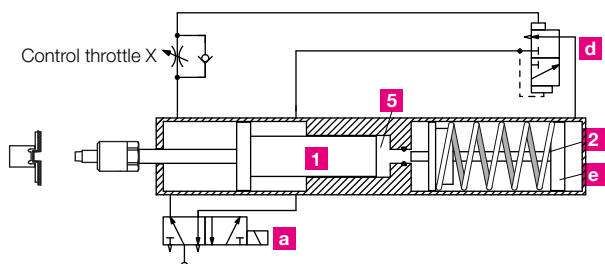
Functioning of the TOX[®]-Powerpackage



Fast approach – the main control valve **a** is switched. The working piston **1** extends, initially with a fast approach stroke, until it meets resistance at any point. It stops and the integrated power stroke valve **d** is shifted. Air flows into chamber **e**.



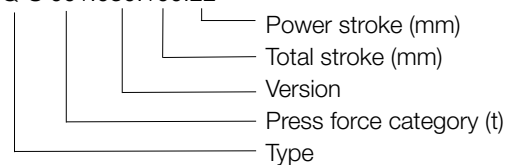
Power stroke – the intensifier piston **2** closes the high pressure chamber **5** and compresses the oil in the working area up to 400 bar. This oil pressure applies pressure to the back of the working piston **1** and triggers the power stroke.



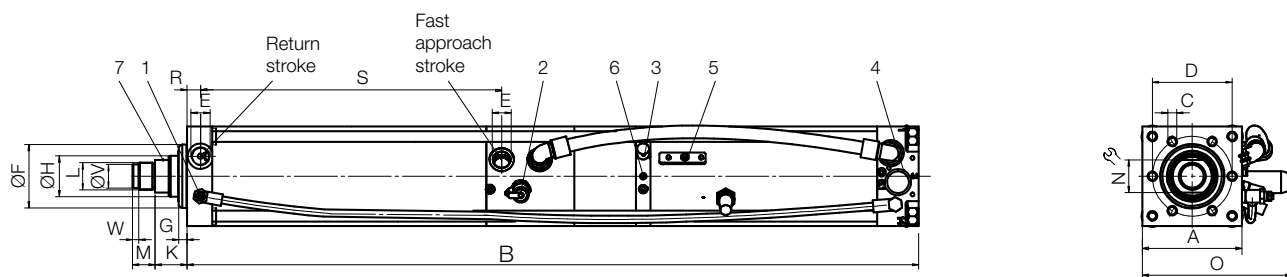
Return stroke – after the changeover of the main control valve **a** the power stroke valve **d** automatically vents the chamber **e**. The intensifier piston **2** and the working piston **1** return to their initial position one after the other.

Example for ordering:

Q-S 001.030.100.22



TOX®-Powerpackage line-Q, type Q-S



Type	Total stroke	Incl. Power stroke	at 6 bar compressed air			Weight kg
			Max. Press force kN	Fast approach force N	Retracting force N	
Q-S 001.030.050.21***	50	21	11.6	1400	1450	12
Q-S 001.030.100.22***	100	22	11.6	1400	1450	12
Q-S 002.030.050.12	50	12	16.5	1400	1450	12
Q-S 002.030.100.12	100	12	16.5	1400	1450	12
Q-S 004.030.050.12	50	12	39.9	1700	1900	20
Q-S 004.030.100.12	100	12	39.9	1700	1900	20
Q-S 008.030.050.11	50	11	76.4	3200	3250	36
Q-S 008.030.100.12	100	12	76.4	3200	3250	36
Q-S 015.030.050.12	50	12	130.4	4500	5350	59
Q-S 015.030.100.12	100	12	130.4	4500	5350	59
Q-S 030.030.100.12	100	12	283.9	6600	9150	117

Dimensions in mm

Type	A	B	C	D	E	F _{tr}	G	H	K	L	M	N	O	R	S	V _{g6}	W	* IV
Q-S 001.030.050.21***	70	638	6xM8x12	54	G1/4	40	9	20	26.0	M16x1.5	15	17	104	13.0	116.0	-	-	■
Q-S 001.030.100.22***	70	738	6xM8x12	54	G1/4	40	9	20	26.0	M16x1.5	15	17	104	13.0	166.0	-	-	■
Q-S 002.030.050.12	70	638	6xM8x12	54	G1/4	40	9	20	26.0	M16x1.5	15	17	104	13.0	116.0	-	-	■
Q-S 002.030.100.12	70	738	6xM8x12	54	G1/4	40	9	20	26.0	M16x1.5	15	17	104	13.0	166.0	-	-	■
Q-S 004.030.050.12	85	721	6xM8x15	64	G3/8	50	10	30	28.5	M22x2	20	24	124	14.0	125.0	18	7	■
Q-S 004.030.100.12	85	821	6xM8x15	64	G3/8	50	10	30	28.5	M22x2	20	24	124	14.0	175.0	18	7	■
Q-S 008.030.050.11	110	841	6xM10x16	88	G1/2	70	9	45	35.0	M30x2	25	36	165	15.0	133.0	26	7	■
Q-S 008.030.100.12	110	941	6xM10x16	88	G1/2	70	9	45	35.0	M30x2	25	36	165	15.0	183.0	26	7	■
Q-S 015.030.050.12	135	878	6xM16x25	100	G1/2	75	15	50	36.0	M30x2	25	41	175	17.5	134.5	26	7	■
Q-S 015.030.100.12	135	978	6xM16x25	100	G1/2	75	15	50	36.0	M30x2	25	41	175	17.5	184.5	26	7	■
Q-S 030.030.100.12	170	1207	6xM20x30	132	G3/4	100	17	56	47.0	M39x2	35	50	232**	20.0	236.0	-	-	-

*IV: integrated sequence valve

**Series with external sequence valve approach/power stroke

Dimensions in mm

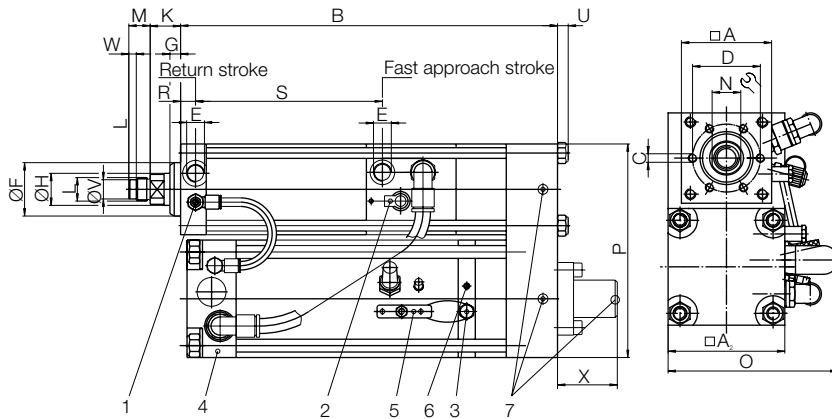
***Note for devices of type 001: To assemble accessories (see data sheets 10.10 TOX®-Powerpackage Accessories/110.00 Sensors) please observe the TOX®-Powerpackage dimensions and use compatible accessories of type 002.

Pneumatic connection sizes

Connection	Nominal sizes/Inside-Ø hose
G1/4"	7 - 8 mm
G3/8"	8 - 9 mm
G1/2"	10 - 11 mm
G3/4"	19 - 20 mm
G1"	25 mm
G1 1/2"	38 mm

Note: For a trouble-free operation, the connection size and nominal size must be maintained throughout the compressed air supply.

TOX[®]-Powerpackage line-Q, type Q-K



- 1 Control throttle X
- 2 High pressure connection
- 3 Oil filling nipple
- 4 Sequence valve approach/power stroke
- 5 Bleed plate
- 6 Oil level indicator
- 7 Bleed screw

Type	Total stroke	Incl. Power stroke	at 6 bar compressed air			Weight kg
			Max. Press force kN	Fast approach force N	Retracting force N	
Q-K 001.030.100.24***	100	24	11.8	1400	1450	20
Q-K 001.030.200.52***	200	52	11.8	1400	1450	27
Q-K 002.030.100.15	100	15	16.3	1400	1450	20
Q-K 002.030.200.34	200	34	16.3	1400	1450	27
Q-K 004.030.100.05	100	05	48.6	1700	1900	33
Q-K 004.030.200.13	200	13	48.6	1700	1900	43
Q-K 008.030.100.08	100	08	67.4	3200	3250	62
Q-K 008.030.200.18	200	18	67.4	3200	3250	77
Q-K 015.030.200.12	200	12	140.4	4500	5350	134

Dimensions in mm

Type	A	A ₂	B	C	D	E	F ₁₇	G	H	K	L	M	N	O	P	R	S	U	V _{g6}	W	X	*IV
Q-K 001.030.100.24***	70	85	371	6xM8x12	54	G1/4	40	9	20	26.0	M16x1.5	15	17	117	160	13.0	166.0	8	-	-	98.5	■
Q-K 001.030.200.52***	70	85	571	6xM8x12	54	G1/4	40	9	20	26.0	M16x1.5	15	17	117	160	13.0	266.0	8	-	-	244.5	■
Q-K 002.030.100.15	70	85	371	6xM8x12	54	G1/4	40	9	20	26.0	M16x1.5	15	17	117	160	13.0	166.0	8	-	-	98.5	■
Q-K 002.030.200.34	70	85	571	6xM8x12	54	G1/4	40	9	20	26.0	M16x1.5	15	17	117	160	13.0	266.0	8	-	-	244.5	■
Q-K 004.030.100.05	85	110	397	6xM8x15	64	G3/8	50	10	30	28.5	M22x2	20	24	165	200	14.0	175.0	10	18	7	86.5	■
Q-K 004.030.200.13	85	110	597	6xM8x15	64	G3/8	50	10	30	28.5	M22x2	20	24	165	200	14.0	275.0	10	18	7	204.5	■
Q-K 008.030.100.08	110	135	426	6xM10x16	88	G1/2	70	9	45	35.0	M30x2	25	36	177	250	15.0	183.0	12	26	7	93.5	■
Q-K 008.030.200.18	110	135	626	6xM10x16	88	G1/2	70	9	45	35.0	M30x2	25	36	177	250	15.0	283.0	12	26	7	229.5	■
Q-K 015.030.200.12	135	170	650	6xM16x25	100	G1/2	75	15	50	36.0	M30x2	25	41	232**	315	17.5	284.5	16	26	7	185.5	-

*IV: integrated sequence valve

**Series with external sequence valve approach/power stroke

Dimensions in mm

***Note for devices of type 001: To assemble accessories (see data sheets 10.10 TOX[®]-Powerpackage Accessories/110.00 Sensors) please observe the TOX[®]-Powerpackage dimensions and use compatible accessories of type 002.

Pneumatic connection sizes

Connection	Nominal sizes/Inside-Ø hose
G1/4"	7 - 8 mm
G3/8"	8 - 9 mm
G1/2"	10 - 11 mm
G3/4"	19 - 20 mm
G1"	25 mm
G1 1/2"	38 mm

How to order:

Q-S 008.030.100.12

└ Power stroke (mm)

└ Total stroke (mm)

└ 6 bar series

└ Press force category

└ Version S/K

└ line-Q

Note: For a trouble-free operation, the connection size and nominal size must be maintained throughout the compressed air supply.